

## ZETA

Litenet presents the ZETA range which is a beautifully designed hand rail light fitting which offers a range of clip in hand rail lights that are designed for commercial lighting applications such as hospitality, education, aged care or health industry. The Zeta collection is a recessed hand rail light that is available in cool white or warm white fitting is a low profile light is available with stainless steel finish with SMD LED with CRI80.

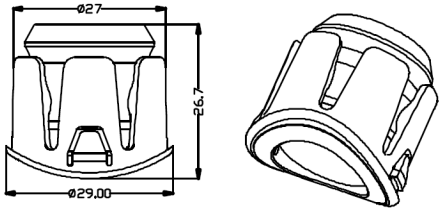
The Zeta fitting is suitable for diameter of 40mm to 60mm Hand rail tube thickness needs to be less than 1.6mm. Custom made fittings are available.

ZETA range is IP67 IK08 with an efficient heat sink using die cast high grade aluminum to maximise heat dissipation which will intern maximise the life of the LED chip.

Non-dimmable ECG standard or DALI dim is optional.  
50,000 hour life 5 with year warranty L80

**Recommendations:**

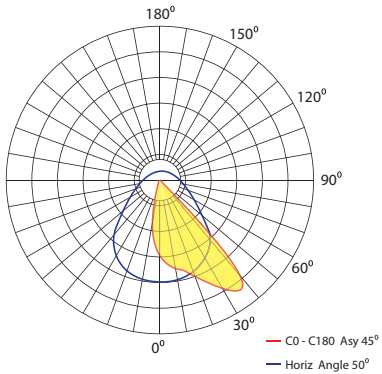
- Up to 40pcs of 1.8w fittings can be used with a 120w 24vDC LED Driver.
- Use 2.5m Sq Cable for maximum distance of 40m from the LED driver to the first fitting.
- The total distance of the cable that contains LED pods should not exceed 50m.



- CREE SMD 3000K / 4000K
- DC24V
- Non-Dim, DALI
- 27mm



Hole Cut drilling Accessory



- 
- 
- 
- 
- 
- 

Power	1.75W
LED	SMD
Luminous flux 3K	121lm
Luminous flux 4K	143lm
Dimensions	29mm x 27mm
Cut Out	27mm
Beam angles	ASYMMETRIC
CRI	80
3000K Part No	ZETA 15803
4000K Part No	ZETA 15804